



— BLOOM LIFE AND BEAUTY —



Manufactured by

**Bloomage Biotechnology Corp., Ltd.**

Add: F.33, Tower D, BITC, 6A, Jianguomenwai Avenue, Chaoyang District, Beijing, China 100022

Website: [www.biohyalux.com](http://www.biohyalux.com)

Email: [international@bloomagebiotech.com](mailto:international@bloomagebiotech.com)

Only for internal study

## BLOOM LIFE AND BEAUTY

From Raw Materials to the Finished Syringe,  
total quality control provides you Safe & Effective beauty solution.

**BIOHYALUX®**

# Range Of Cross-linked Hyaluronic Acid Dermal Fillers





**BioHYALUX®**  
Hyaluronan Soft Tissue Filling Gel  
1 mL

**Basic**



**BioHYALUX®**  
Hyaluronan Soft Tissue Filling Gel  
Deep Dermis  
1 mL

**Deep Dermis**




**BioHYALUX®**  
Hyaluronan Soft Tissue Filling Gel  
Fine Lines  
1 mL


**Fine Lines**





**BioHYALUX®**  
Hyaluronan Soft Tissue Filling Gel  
LIPS  
1 mL

**Lips**

Concentration	20 mg/ml
Indications	Augmentation of facial tissue
Injection depth	
Needle	27 G × 1/2"
Packaging	1 × 1 ml

Concentration	20 mg/ml
Indications	Correction of scars or deep wrinkles or facial rejuvenation
Injection depth	
Needle	27 G × 1/2"
Packaging	1 × 1 ml

Concentration	20 mg/ml
Indications	Correction of fine lines and wrinkles or facial defects
Injection depth	
Needle	30 G × 1/2"
Packaging	1 × 1 ml

Concentration	20 mg/ml
Indications	For lip defects or volume enhancement
Injection depth	
Needle	27 G × 1/2"
Packaging	1 × 1 ml



BIOHYALUX®

— BLOOM LIFE AND BEAUTY —



i n j e c t i o n p o i n t

## Ease Of Injection

- ▶ Ergonomic and special design of components: Large Plunger Rod and Finger Flange.
- ▶ Precise graduation marks guarantee accurate reading of injected volume.
- ▶ The length of syringe is proper to inject.



**Ergonomic**

**Steady**

**Precise**



All of these ensure stability & control during the entire treatment, which makes BIOHYALUX® much more comfortable for both practitioners & patients.

# Technology

## Bloomage Biotechnology Cross-linking Technology

BIOHYALUX® range is cross-linked using BDDE which has over 20 years' clinical safety data.

Cross-linking consists of linking naturally occurring linear HA chains together to form a 3D Network, which provides higher resistance to natural enzymatic degradation and therefore a longer duration.

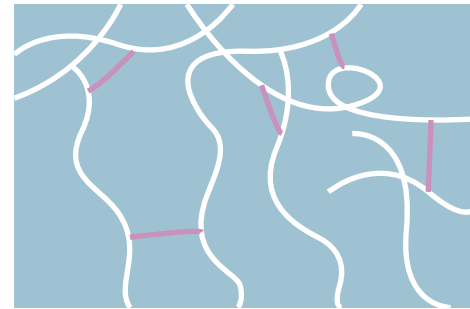
## Granulating Technology

BioHyalux's patented granulating technology gives you a uniform particle size for consistently natural results.



### Non-cross-linked HA

Our body uses enzymes to degrade non-cross-linked HA usually in 2-3 days, and is why injecting pure HA in the body provides no wrinkle correction.

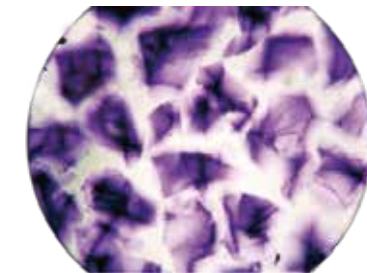


BIOHYALUX® lasts longer in the body with an effective rate of up to 53% at 15 months.

### Cross-linked HA

BDDE is used to form bridges between HA chains. The cross-link is effected via the hydroxyl groups, which form an ether bond, and is able to withstand the body's natural enzyme degradation.

The 150 times magnified photo of dyed gel particles under the microscope



## Safe

Bloomage Biotechnology manufactures its own high-purity HA raw material\*

Non-animal biofermentation source

- No pre-treatment skin test required
- No risk of transmitting animal diseases

Quality higher than standard of European Pharmacopoeia and Japanese Pharmacopoeia

- Minimal risk of allergic reactions

Double sterilization technique

Aseptic filling and terminal sterilization

Sterility Assurance Level (SAL)  $\leq 10^{-6}$